



MANUFACTURERS OF THE WORLD'S FINEST FLOOR SANDERS

WWW.ESSEX-SILVER-LINE.COM

ESLC17 Low Speed Rotary Polisher



Prices Subject to Change w/o notice

4/1/2024

Unpacking your new ESLC17:

When your package is delivered, check each of the 2 cartons carefully for signs of rough handling. If the ESLC17 is damaged, notify the carrier immediately and request an inspection. Be sure to keep the cartons, packing inserts, packing lists and carrier's receipt until the inspector has verified your claim.

Essex Silver-Line's liability ceases when the carrier picks up the shipment. However, our customer service staff will be happy to furnish any information needed in connection with the claim and will attempt to expedite a resolution.

Please Read Before Operating Your New ESLC17:

Read the manual carefully and completely before attempting to operate the unit. This manual has important information for the use and safe operation of the machine. Always keep this manual handy.

This equipment has been engineered and manufactured to provide excellent performance and service. To ensure that your equipment will continue to perform as intended;

- Maintain and inspect equipment regularly.
- Use only original Essex Silver-Line supplied parts when servicing.
- Operate equipment with care.

If additional information is needed, please contact Essex Silver-Line at: 800 451-5560 or email info@essex-silver-line.com

All information and specifications printed in the manual are current at the time of printing; however, because of Essex Silver Line's policy of continual product improvement, we reserve the right to make changes at any time without notice.

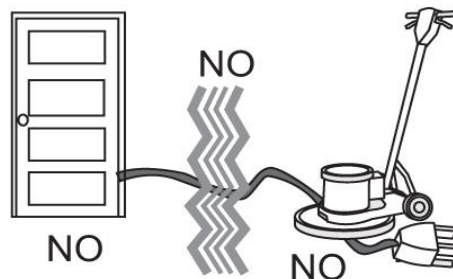
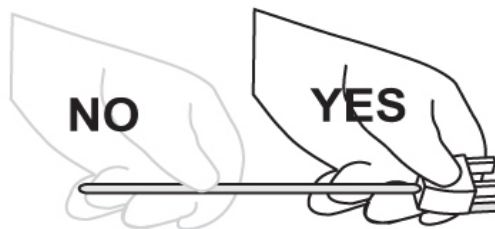
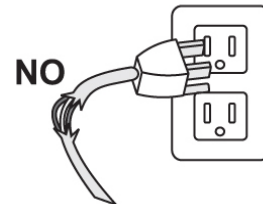
Notes:

Safe Operating Conditions.

Read this manual before using floor machine. Know the proper operation, correct applications and limitations of this equipment before use.

Reduce the Risk of Fire, Electric Shock or Injury:

- This floor machine is designed for indoor use only. Do not use outdoors. Do not expose to rain.
- Do not wash the motor with flowing water. If the motor gets wet, seek authorized service.
- Keep the vents on this air-cooled motor free from debris. Do not operate with the motor covered or with vents blocked.
- Never operate this floor machine near flammable dusts, liquids or vapors. Never use flammable solvents as a cleaning agent. Engine sparks and operating heat can cause fire.
- Never handle electrical equipment with wet hands. Never operate this floor machine with bare feet.
- Unplug the floor machine when not in use and when servicing the equipment. To unplug, grasp the plug, not the cord.
- Do not operate a floor machine with damaged handle controls, cord or plug. If the equipment is not performing properly, seek repair from a qualified service supplier.
- This floor machine is constructed with electrical grounding at the plug. Operate only when connected to a properly grounded outlet. See grounding details.
- Prevent electrical cord abuse. Do not close a door upon the cord, drive equipment over it or run the floor machine over it. Do not expose the cord to hot surfaces. Do not lift, pull or carry this floor machine by the cord.
- Never operate the floor machine over sharp objects that can be thrown out and harm the operator and damage the floor. Sweep hard surfaces before scrubbing or bonnet cleaning.
- Train your staff in proper use of this floor machine.



Electric Power:

This floor machine operates on a 15 amp nominal 115V, 60 Hz, A.C. power circuit. (Motors may be custom wired at the factory 220V, 50 Hz international operation.) The amps, hertz and voltage ratings are listed on the motor spec label found on each floor machine. Using voltages above or below those indicated on the spec label will damage the motor. Always check your local voltage requirements.

Grounding Instructions:

This floor machine must be grounded while in use to protect the operator from shock. This machine is built with a 3-wire cord and a 3-prong grounding-type plug (Figure 1) to fit a properly grounded receptacle.

Before using this floor machine, make sure a properly grounded, 3-hole electrical outlet is available. If not available, as in some older facilities, use an adapter for connecting a 3-prong plug to a 2-prong receptacle (Figure 2) to ground the outlet chassis.

Important!! This Adapter may not be used in Canada.

Important!! Never cut off the grounding prong for use in a 2-Prong outlet. By doing so, you have cut off your protection from electric shock.

Never assume that all 3-hole outlets are properly grounded. Check before use.

Never assume that an adaptor connection is properly grounded. Check the outlet with a *ground fault interrupter device* which will quickly indicate if a ground is connected. Correct a faulty grounding before proceeding.

Extension Cords are Not Recommended

The floor machine is built with a 50 foot (15 M) safety cord which plugs directly into an approved outlet. Use of any extension core is NOT RECOMMENDED'

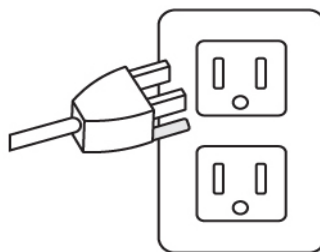


Figure 1

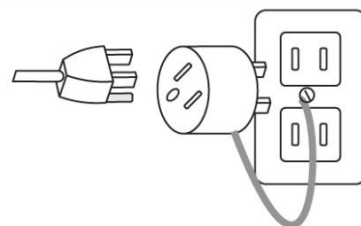


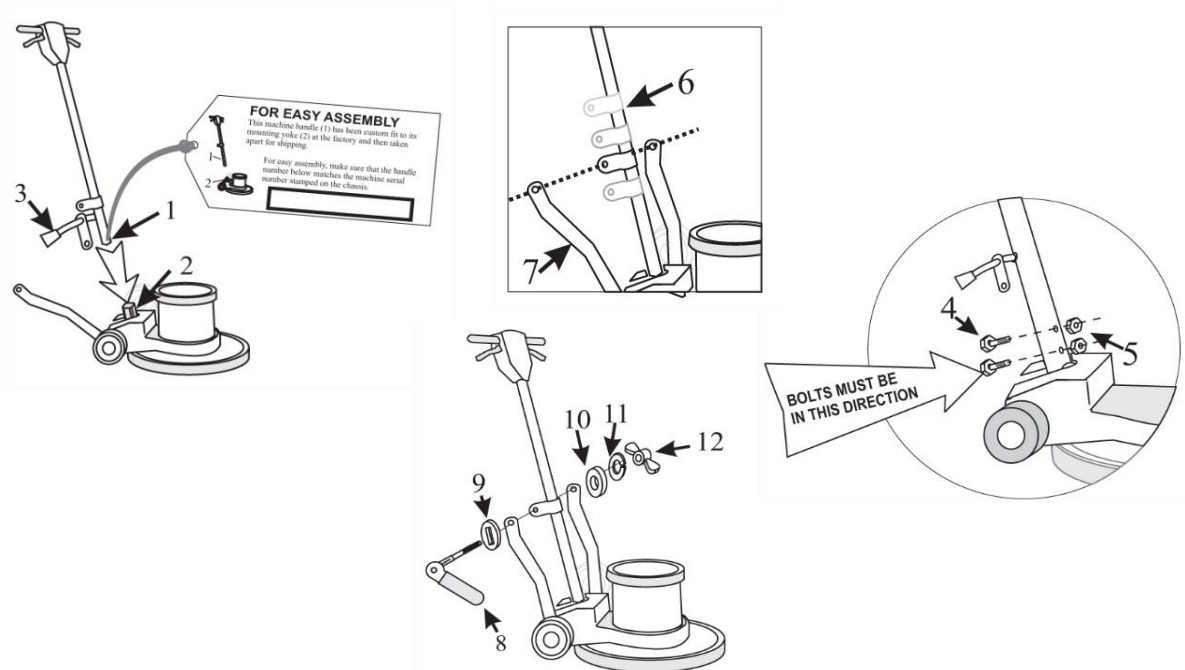
Figure 2

Install the Handle

The machine handle (1) has been custom fit to its mounting yoke (2) at the factory and then taken apart for shipping. For easy assembly, make sure that the handle number on the tag (see picture) matched the serial number stamped on the chassis.

You will need two 7/16" wrenches to complete the assembly:

1. Remove the handle and mounting hardware from the carton. Bolts, nuts, washers and the locking lever assembly are in the plastic bag attached to the handle
2. Position the handle (1) over the mounting yoke (2) with the power cord (3) facing away from the motor. Push the tube down until the bolt holes are lined up.
3. Insert the mounting bolts (4) into the bolt holes from the back of the machine. Secure each bolt with a locking nut (5). The locking nuts will face the motor.
4. The handle mounting collar (6) is designed to slide freely up and down the handle tube. This feature allows the handle to be adjusted for the comfortable operation of all users. Align the mounting collar (6) and the two bent handle braces (7).
5. Remove the lever assembly parts from the plastic bag.
 - Place the thick spacer with the rectangular hole (9) onto the locking lever shaft (8). The spacer must fit onto the rectangular neck of the lever.
 - Insert the shaft through the mounting hole in the right handle brace, the mounting collar and the left handle brace.
 - Place the spacer (10) on the shaft.
 - Place the split washer (11) on the shaft.
 - Adjust the wing nut for tightness. When correctly installed, the collar shaft slides easily when the cam engineered locking lever is "up", but is firmly fixed when the lever is down.



Attaching the Power Cord:

The triple-wire grounded power cord has been factory-installed into the handle tube. A flexible rubber cable connector (11) is used to secure the plug-in connections. The floor machine ships with this connector mounted on the cord coming out of the handle (10). Stretch the connector and slip the male connector (9) (coming out of the motor housing) through the connector hole and then into the female connector.

Now, plug the end of the 50-foot cord into a grounded power outlet. Squeeze the triggers on the handle and check power to the motor.

Install a Brush or Pad Driver:

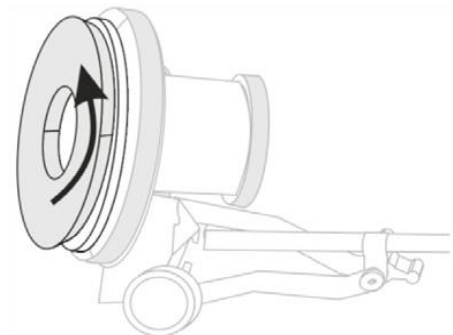
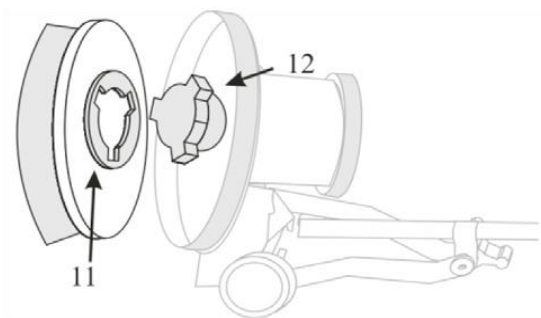
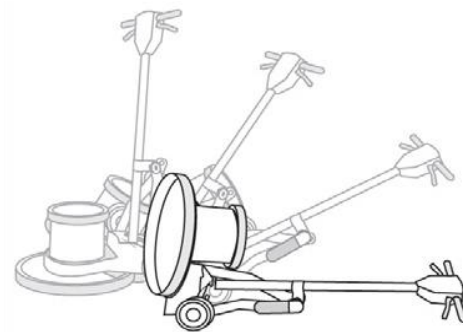
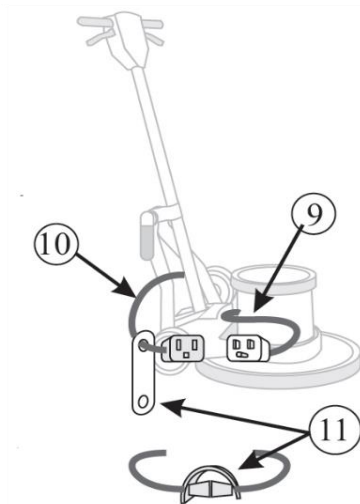
A brush or pad driver mounts onto your floor machine with a “B” style universal clutch plate.

Unplug the floor machine. Lock the machine handle in the “up” position and tip the floor machine back onto the handle.

Slide the brush or pad driver clutch plate (11) over the drive plug (12).

Quickly spin the brush counterclockwise to lock the brush onto the drive plug.

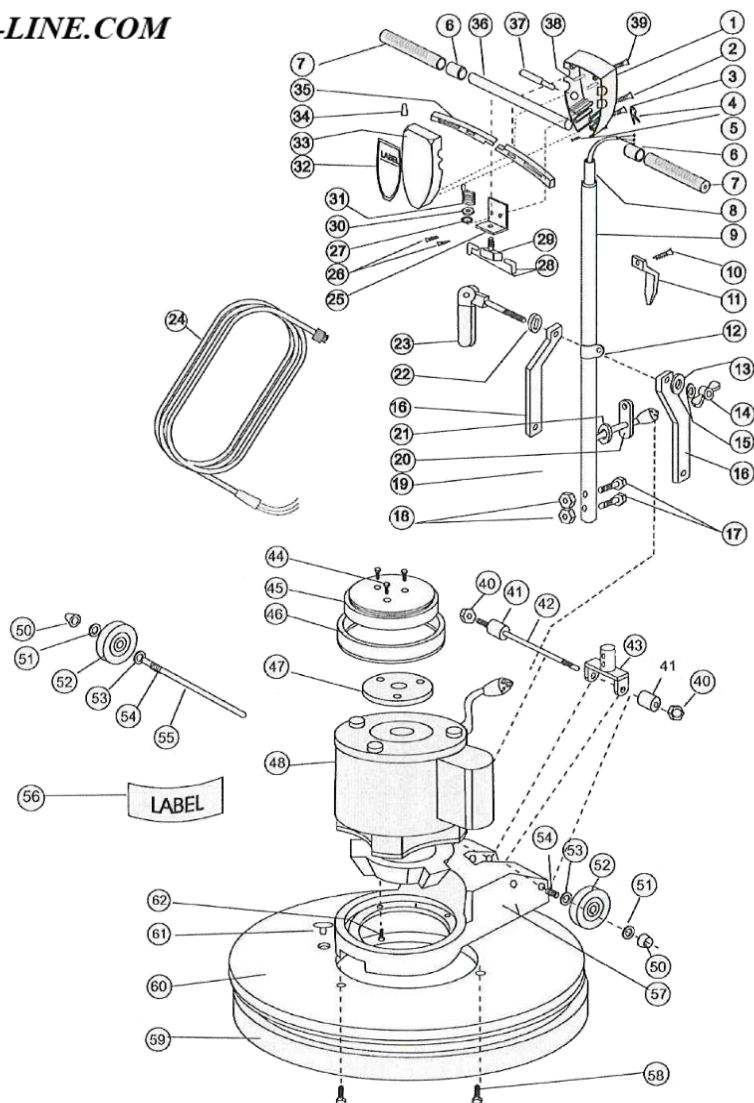
Now, lower the machine back onto the brush. You’re ready to go to work.





MANUFACTURERS OF THE WORLD'S FINEST FLOOR SANDERS

WWW.ESSEX-SILVER-LINE.COM

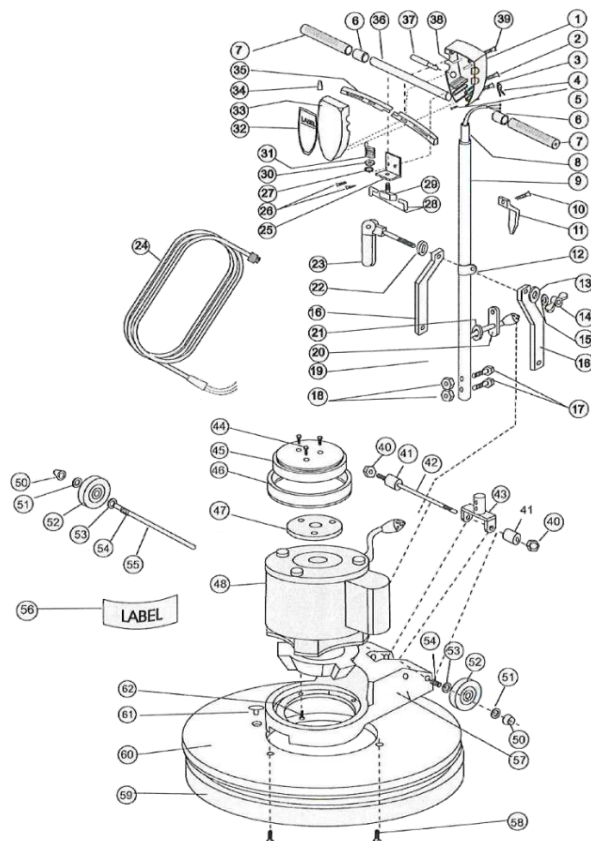


Essex Silver-Line ESLC17

ESLC17 Parts

Item #	Part Number & Description	Qty
1	Mer-A104 Switch Box Back	1
2	Mer-B23 Handle Tube Screw	2
3	Mer-B21 Switch Box Closing Screw	4
4	Mer-M213 Strain Relief Clip	1
5	Mer-B68 Ground Wire Screw	2
6	Mer-M218BLK Rubber Spacer - Black (Handle)	2
7	Mer-M218 Hand Grip	2
8	Mer-M247 Handle Tube Insert	1
9	Mer-M206 Handle Tube Assembly	1
10	Mer-B2 Cable Hook Screw	2
11	Mer-A164 Cable Hook	1
12	Mer-A111 Sliding Collar	1
13	Mer-B37 Cam Washer	1
14	Mer-B25 Cam Lock Wing Nut	1
15	Mer-B39 Cam Split Washer	1
16	Mer-M216 Bent Brace	2
17	Mer-B18A Yoke Bolt	2
18	Mer-B19 Yoke Nut	2
19	Mer-G16 Handle Tube Cable	1
20	Mer-M249 Black Rubber Cable Connector	1
21	Mer-B63 Cable Grommet	1
22	Mer-B67 Rectangular Hole Cam Washer	1
23A	Mer-C100 Cam Assembly	1
23B	Mer-CCA Complete Cam Assembly Kit (includes 13, 14, 15, 22, 23)	1
24	Mer-G1450-G 50' Power Cable 14/3 Green	1
25	Mer-G30-B Switch Mounting Plate	1
26	Mer-B1 Switch Plate Screw	2
27	Mer-B35 Int. Tooth Lock Washer (For Switch)	1
28	Mer-G48 Insulated Flag Wire Connector	2
29	Mer-G30AB On/Off Switch and Plate Assembly	1
	Mer-G30-AB-BIO On/Off Switch Only (Machines built after 10/17)	
30	Mer-B33 Lock Washer	1
31	Mer-G30-CT057 Trigger Return Spring	4
32	Mer-Label (Handle)	1
33	Mer-A103 Switch Box Front	1
34	Mer- G47 Wire Connector	1
35	Mer-A105 Trigger	2
36	Mer-M211A 16" Crossbar	1
37	Mer-SIA-1 Safety Interlock Assembly	1
38	Mer-B70 Trigger Pin	2
39	Mer-B22 Crossbar Screw	2
40	Mer-B8 Acron Nut for Yoke Pin	2
41	Mer-B5 Rubber Yoke Spacer	2
42	Mer-B7 Yoke Pin	1

Item #	Part Number & Description	Qty
43	Mer-A1001 Yoke	1
44	Mer-B151 Drip Cap Mounting Screw	3
45	Mer-M242 66 Frame Drip Cap Cover	1
46	Mer-M239/G 66 Frame Drip Cap Cover Bumper Green	1
47	Mer-M248 Cork Drip Cap Gasket	1
48	Mer-Motor/GB-LH/E Motor 66 Frame 1.5hp with Gearbox (115V)	1
50	Mer-V0038 Hub Caps	2
51	Mer-B51 Spring Washer	4
52	Mer-M260 Double Wide Wheels	2
53	Mer-B29 1/2" Flat Washer	2
54	Mer-B30 Spring	2
55	Mer-M219 13.5" Axel	1
56	Mer-Label (Motor)	1
57	Mer-A166 Main Machine Frame	1
58	Mer-B96 Apron Mounting Screw	3
59	Mer-M232-17/G Bumper 17" Green	1
60	Mer-A169 Apron 17"	1
61	Mer-B50 Scrubber Plug	1
62	Mer-B31 Base Casting Screw	4
	Mer-972MCapR Run Capacitor Oil (972M/ESLC17)	1
	Mer-972MCapR Start Capacitor Plastic (972M/ESLC17)	1
	Mer-Coupler GB-GR-10 Coupler (Between Motor & Gearbox)	1



Operating Tips

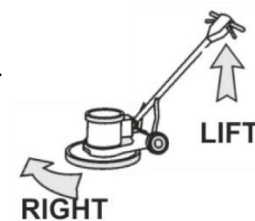
- For indoor use only. Sweep abrasive soils before scrubbing.
- While the brush or pad driver is spinning, keep the floor machine moving to avoid “donut” burns on the floor.

To Start Operation:

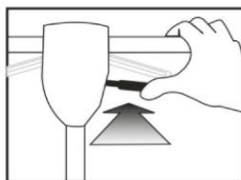
- Unlock the handle by the locking lever.
- Lower the handle to a comfortable position, typically waist height.
- Relock the handle by pushing the lever down. **NEVER OPERATE THE MACHINE WITH THE HANDLE UNLOCKED.**
- This floor machine is a high torque motor. Hold the machine firmly with both hands when starting up.
- Push the red safety interlock switch forward to unlock the dual triggers.
- Squeeze the dual triggers to release power to the motor. Once power is on, either trigger will keep power to the motor.
- To stop machine release both triggers.
- The spinning brush helps to move the floor machine. (Lift the handle slightly to work to the right. Push the handle down slightly to work to the left.)

To Store your Machine

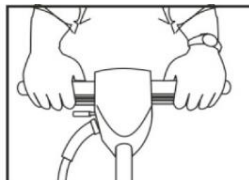
- Lock the handle in the “up” position. Tilt the machine back and remove the pad driver or brush.
- Wind the cord around the handles and bottom cord hook.
- Never store machine standing on the brush.
- Inspect and maintain equipment on a regular schedule for best results.
- Replace worn or damaged pad drivers.
- Check the triggers and switches for proper operation.
- Remove Dust and Debris from motor vents.



**SET HANDLE
HEIGHT**



**PUSH LOCK
FORWARD**



**SQUEEZE BOTH
TRIGGERS**



Transport

To transport this machine to work area.

- Lock the handle in the “up” position. Wind the cord around the handles and the bottom cord hook.
- Tip the machine back onto the transport wheels. Push or pull the machine by the handle, not by the cord or any other part of the machine. Travel carefully.

Troubleshooting

Never operate this floor machine when the equipment is not performing as expected or when any part is visibly damaged. The cause and solution for some basic problems are described below.

The Floor Machine will not Run

- Circuit Breakers are tripped in the building. ***Check and Reset.***
- Equipment is unplugged. ***Check plug at wall and at machine base. Plug In.***
- Power cord failure. ***Test with a working power cord. Lock the handle up and tip the motor back. Unplug the cord at the motor and plug the motor into your working power cord.***
- ***IMPORTANT! THIS IS JUST FOR TESTING. When you do this, you have removed the safety handle controls from the circuit and you are sending power directly to the motor. If the motor now spins, the problem is in the cord of the handle assembly. Repair handle wiring.***
- ***If the motor still does not spin, the problem is either in the male connection at the motor base or in the motor. Repair as needed.***
- Motor sparks or smokes. ***Clean and Repair motor.***

Electrical Shock to Operator

- Equipment wiring failure or electrical short in the machine. ***Seek Authorized service.***
- Poor grounding or no grounding. ***Test the outlet with a ground fault interrupter. Retain certified electrician to inspect and repair grounding. NEVER clip off the ground plug on your cord.***
- Repeated Circuit Breaking. ***High amp draw and circuit breaking can be an electrical or mechanical problem. Seek Authorized service***

High Vibration

- Pads are not centered on the pad driver. ***Tip machine back and re-center the pad.***
- Uneven wear or warp of nylon pads, pad drivers or brushes. ***Replace.***
- Machine chassis is damaged by dropping. ***Replace.***

